

_knowscape mobile

<http://knowscape.fabric.ch/mobile/>

fabric | ch

6, rue de langallerie
1003 lausanne
switzerland

ccps@fabric.ch
<http://www.fabric.ch>

+++++

_knowscape is a digital data territory: an electronic space made of links, connections, relations, knowledge.

initially **_knowscape** has been conceived as an alternative multi-user browser [**_knowscape**, 2001] using data *tracking* and *profiling* techniques to question, to reverse them, so to finally produce open data territories, shared browsing experiences and *open users' profiles*.

_knowscape evolved and became in 2003 a mobile downloadable space, a variable space with no fixed or frozen size as well as no definite location: **_knowscape mobile**.

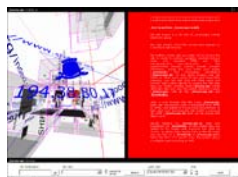
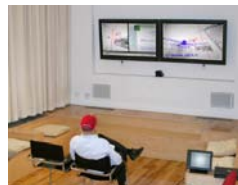
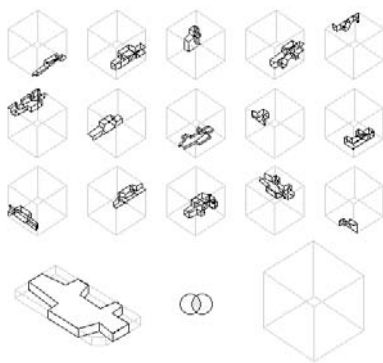
since 2003, **_knowscape mobile** has moved to various places for performances and exhibitions: boston, basel, cambridge, with always both a temporary location in the physical space and a world wide digital one over the Internet.

_knowscape mobile is thus an architectural space temporarily associating networked territory of data with physical space through boolean operations. It therefore links architecture, knowledge and browsing, combining physical presence with digital one.

visitors are invited to interact, either from the sensible space or from the internet, within this new kind of hybrid environment.

+++++

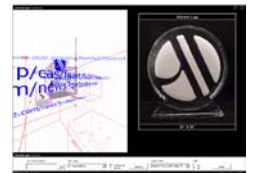
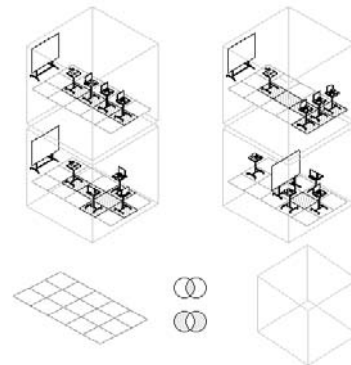
_knowscape mobile
AT SHARE, **Boston**
CyberArts Festival 2003



electronic devices [laptops, plasma displays, beamer, ...] open windows from the lobby of SHARE [Swiss House for Advanced Research and Education, Boston] on this re-localized data territory, which allow visitors to interact, either from the sensible space or from the internet.

+++++

_knowscape mobile
AT DIS2004, **Cambridge**
ACM SIGCHI 2004



at DIS2004, **_knowscape mobile** s(t)imulated space configurations in relation to architectural typologies and architectural models (1:20 potential I-shaped building, T-shaped building, cross-shaped church, square-shaped courtyard), into a conference hall.

+++++

_knowscape mobile
AT HALLE 3.0, **Basel**
Art | 34 | Basel 2003



the mix generates a microarchitecture, a distributed [work-]place, which stands between the three TFT displays, as a networked datascape. a balance is operated between an augmentation of information and a reduction of physical incarnation.